

The Finley

Bedrooms: 3-4
Baths: 2.5-3.5



Craftsman

2,353 sq. ft.



Classic

2,339 sq. ft.



Coastal

2,353 sq. ft.



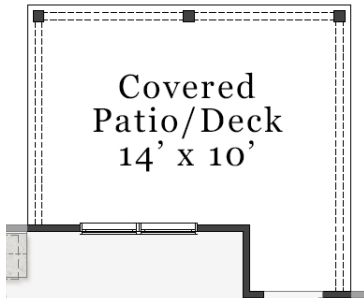
European

2,398 sq. ft.

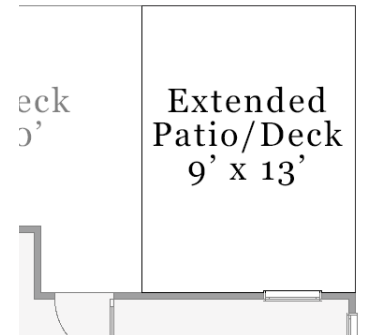


A PERCENTAGE OF EVERY HOME SOLD GOES TO SUPPORT ALZHEIMER'S RESEARCH AND CARE.

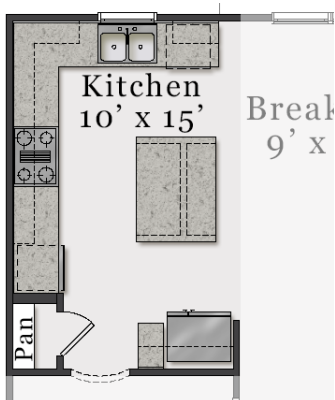
First Floor



Opt. Covered Patio/Deck



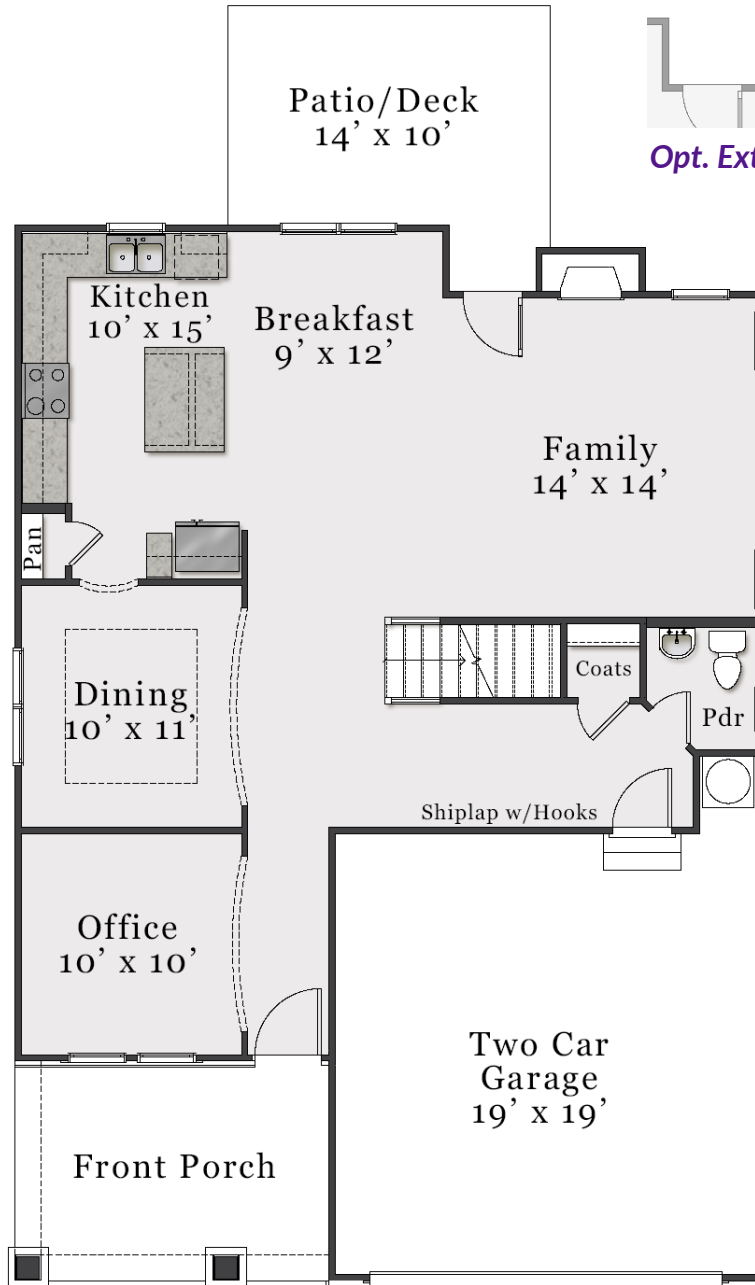
Opt. Extended Patio/Deck



Opt. Deluxe Kitchen

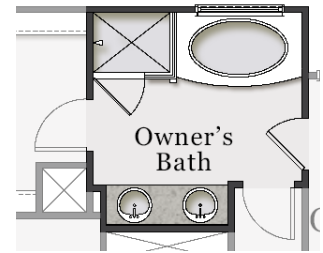
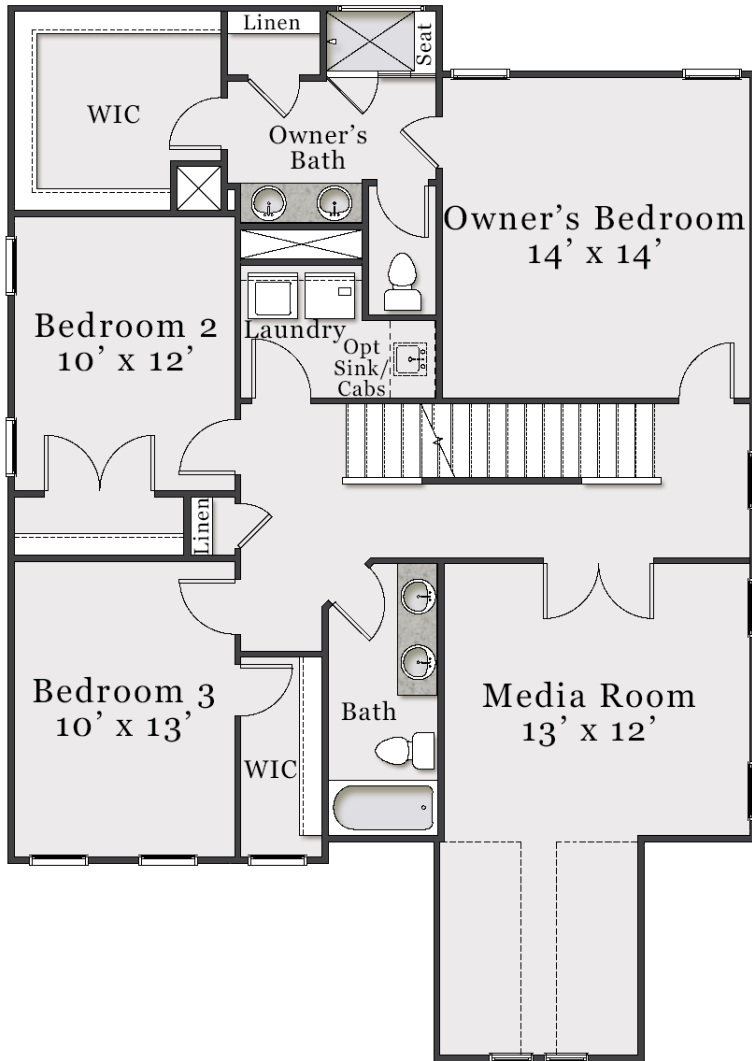


Opt. Office Double Doors

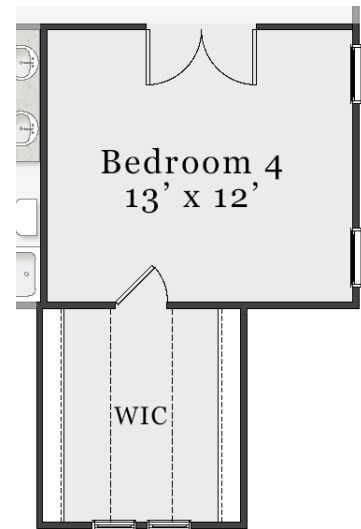


The floorplan shown is the Craftsman elevation.
Other elevations are similar but may include minor layout and square footage differences.

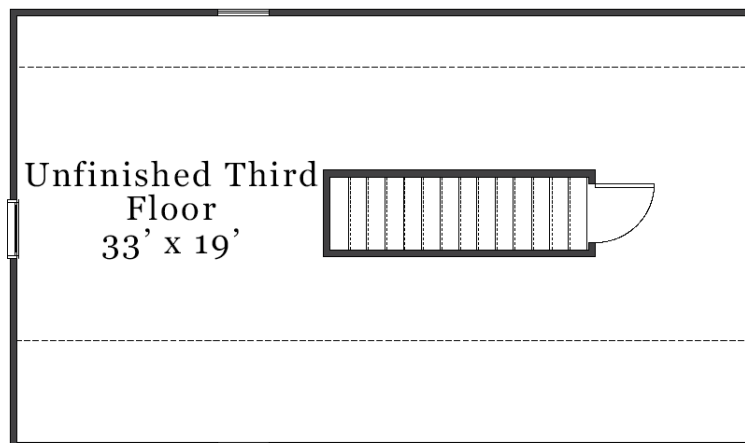
Second & Third Floor



Opt. Deluxe Owner's Bath



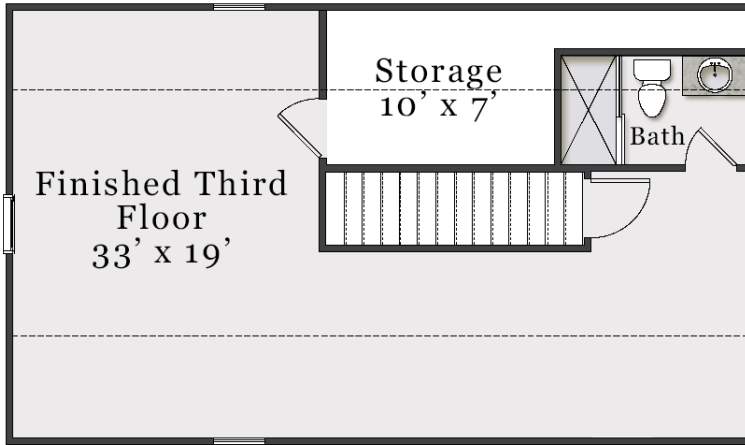
Opt. Bedroom 4



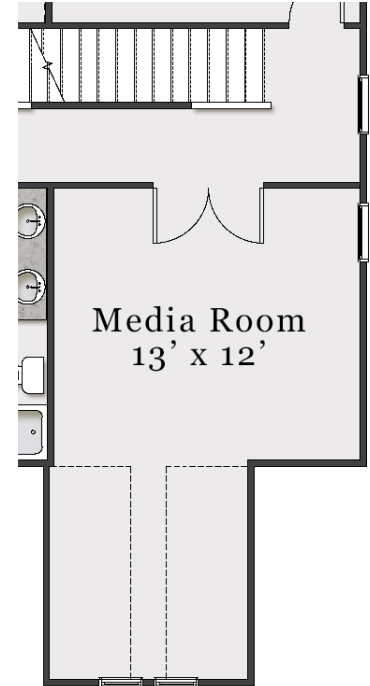
Unfinished 3rd Floor (Approx. 680 sq. ft. unfinished)

The floorplan shown is the Craftsman elevation. Other elevations are similar but may include minor layout and square footage differences.

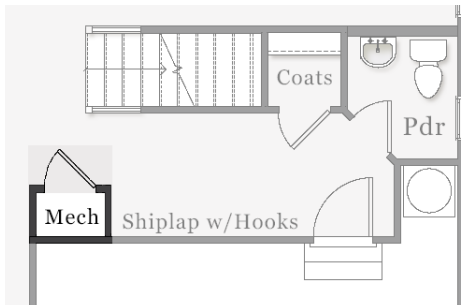
Plan Options



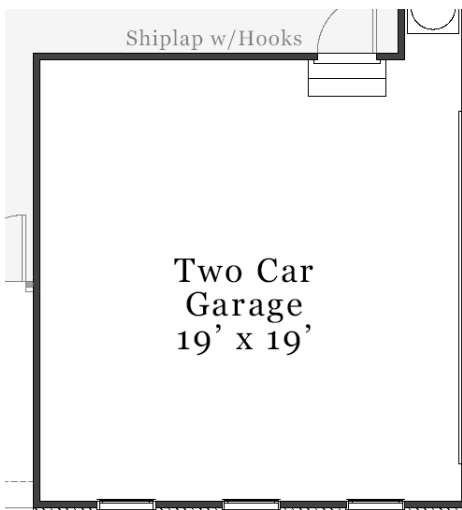
Opt. Finished 3rd Floor with Bath (Approx. 535 sq. ft.)



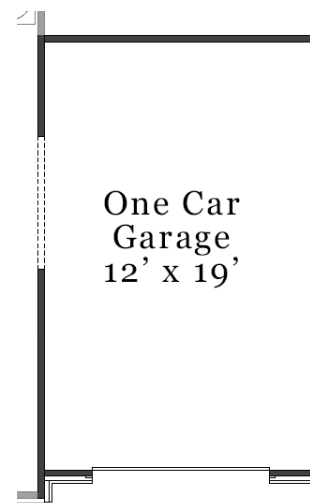
Single Window in Media Room with Opt. Third Bay Garage



Opt. Mech. Closet included with Finished 3rd Floor



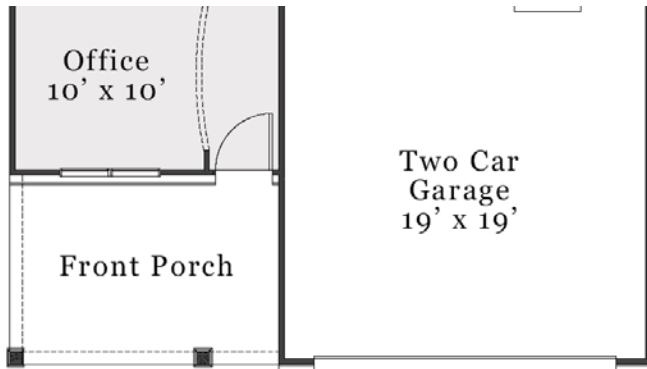
Opt. Side Load Garage



Opt. Third Bay Garage

The floorplan shown is the Craftsman elevation. Other elevations are similar but may include minor layout and square footage differences.

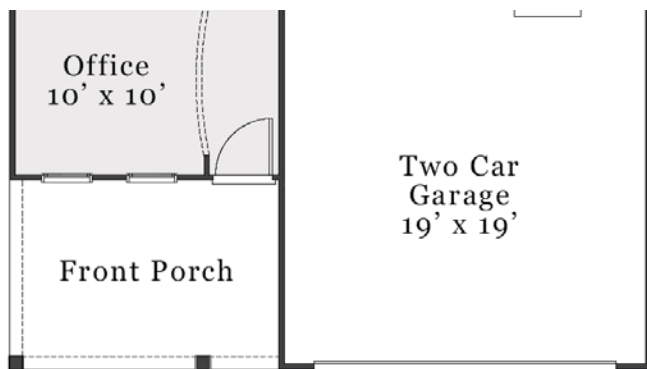
Elevation Specific Base Floors



Classic First Floor



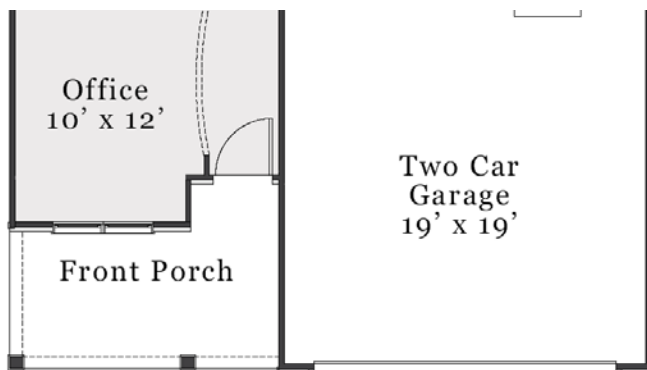
Classic Second Floor



Coastal First Floor



Coastal Second Floor



European First Floor



European Second Floor