

The McKimmon

Bedrooms: 3-4
Baths: 2.5-3.5



2,525 sq. ft.



2,525 sq. ft.



2,530 sq. ft.

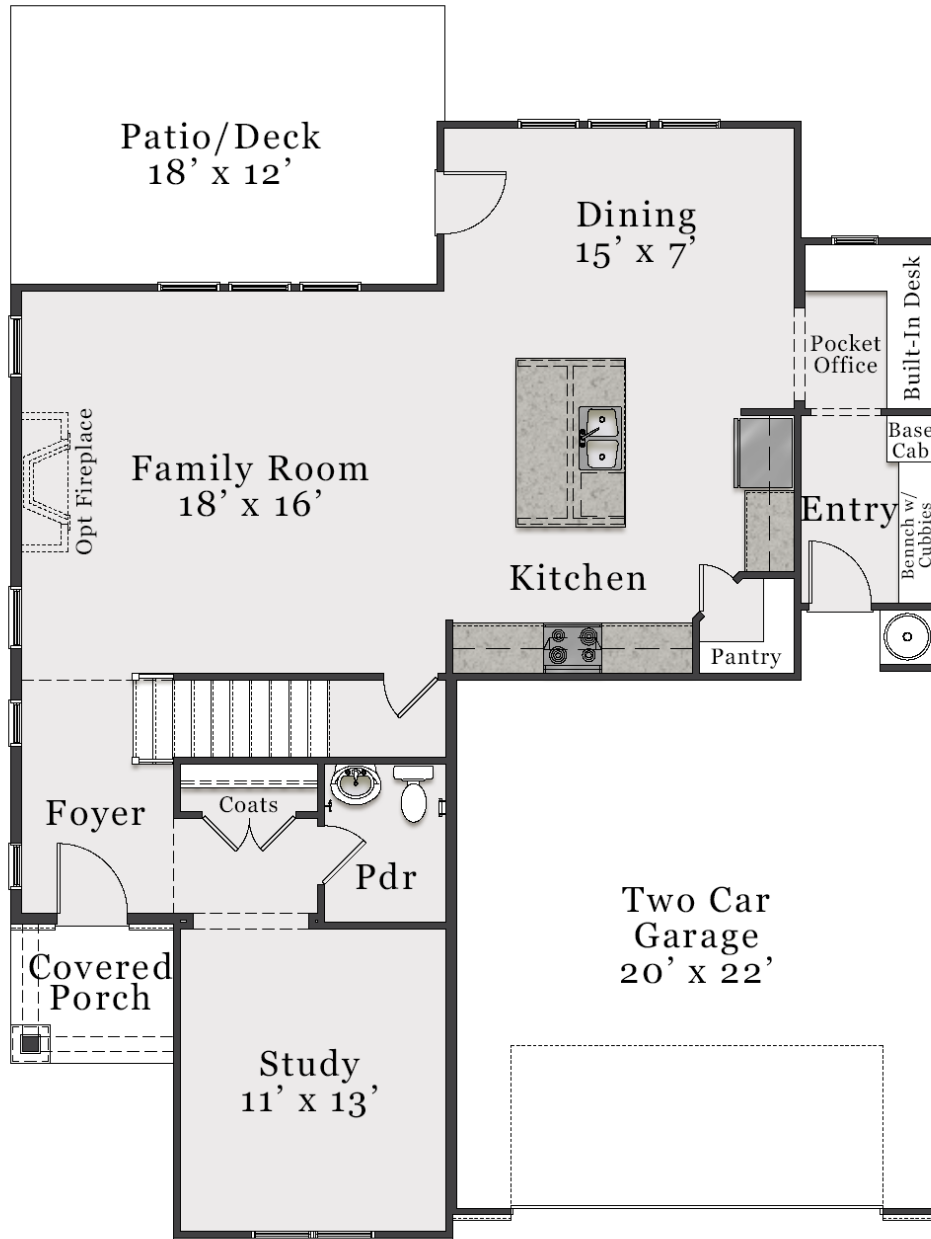


2,533 sq. ft.



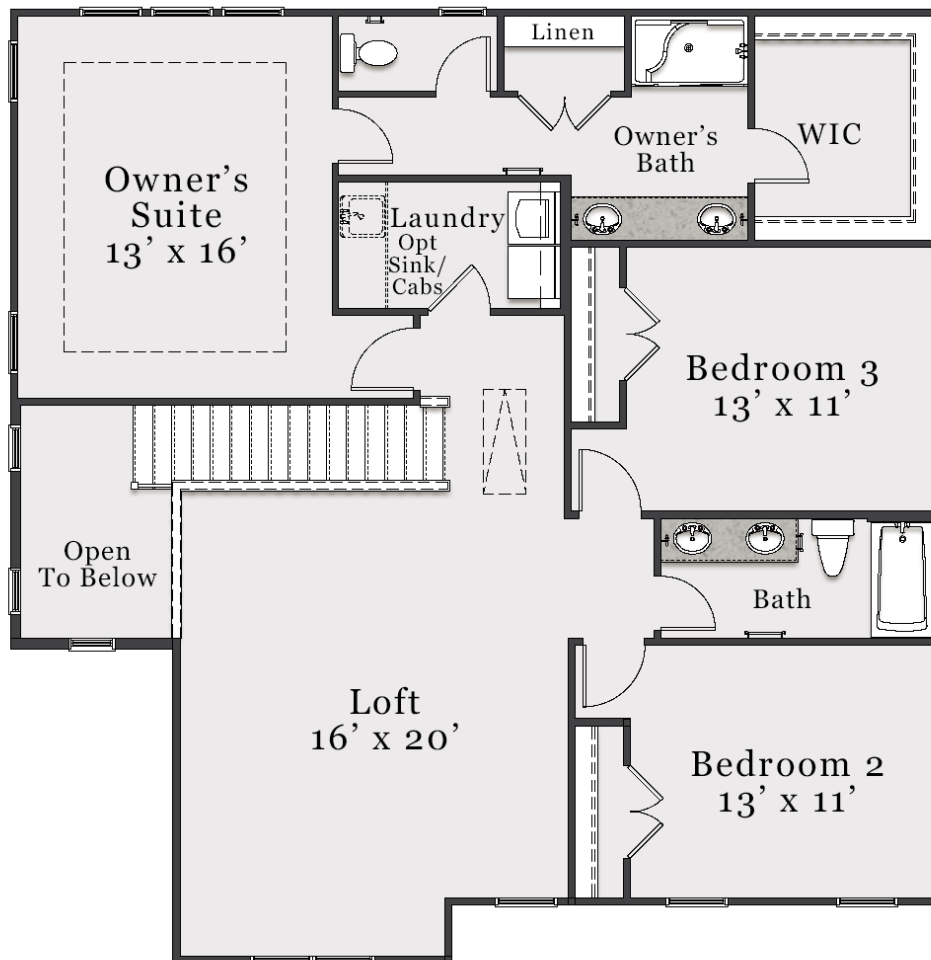
A PERCENTAGE OF EVERY HOME SOLD GOES TO SUPPORT ALZHEIMER'S RESEARCH AND CARE.

First Floor



The floorplan shown is the Craftsman elevation.
Other elevations are similar but may include minor layout and square footage differences.

Second Floor

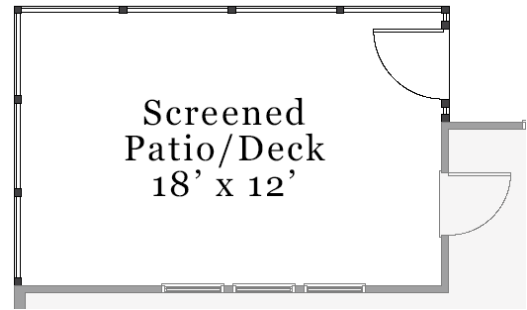


The floorplan shown is the Craftsman elevation.
Other elevations are similar but may include minor layout and square footage differences.

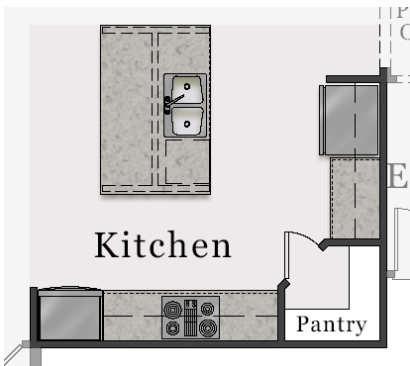
Plan Options



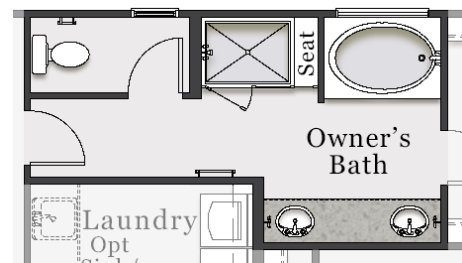
Opt. Covered Patio/Deck



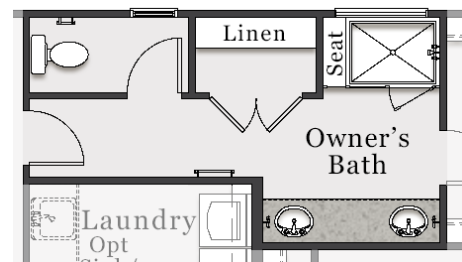
Opt. Screened Patio/Deck



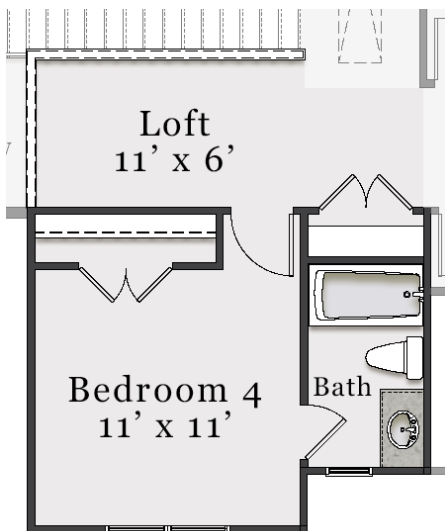
Opt. Deluxe Kitchen



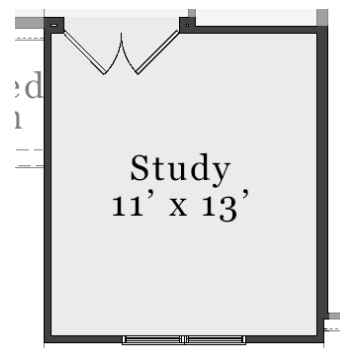
Opt. Deluxe Owner's Bath



Opt. Owner's Bath w/Tiled Shower



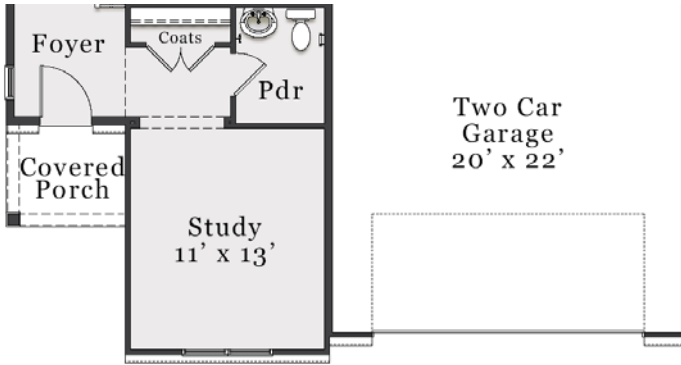
Opt. Bedroom 4 ILO Loft



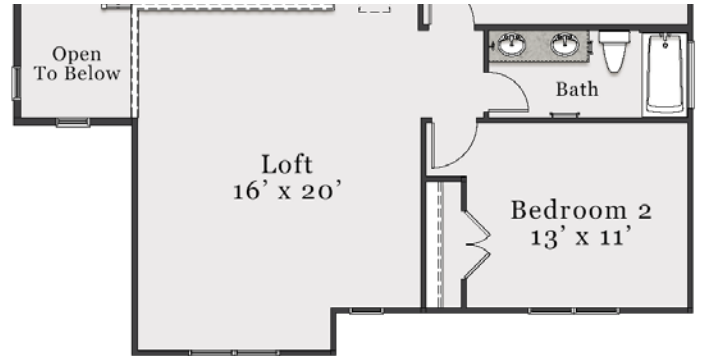
Opt. Study with French Doors

The floorplan shown is the Craftsman elevation. Other elevations are similar but may include minor layout and square footage differences.

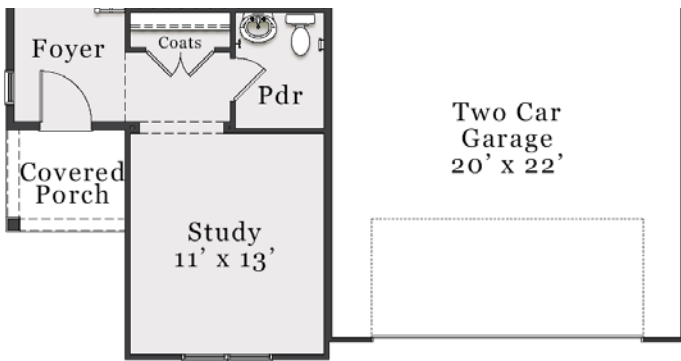
Elevation Specific Base Floors



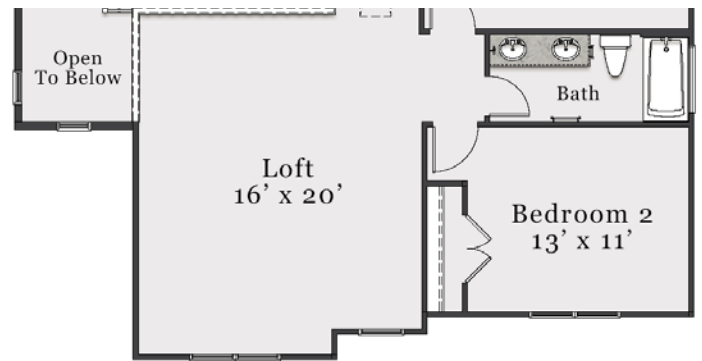
Classic First Floor



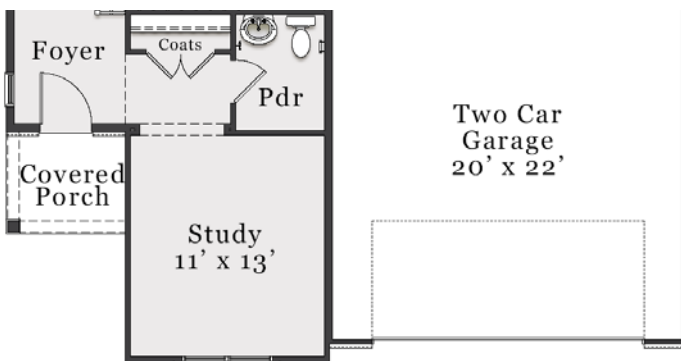
Classic Second Floor



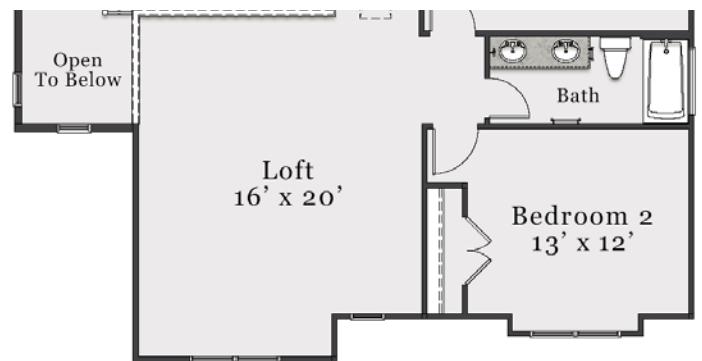
Coastal First Floor



Coastal Second Floor



European First Floor



European Second Floor