

The Brooks

Bedrooms: 4-5 Baths:
3-4



Craftsman

2,929 sq. ft.



Classic

2,929 sq. ft.



Coastal

2,935 sq. ft.



European

2,942 sq. ft.

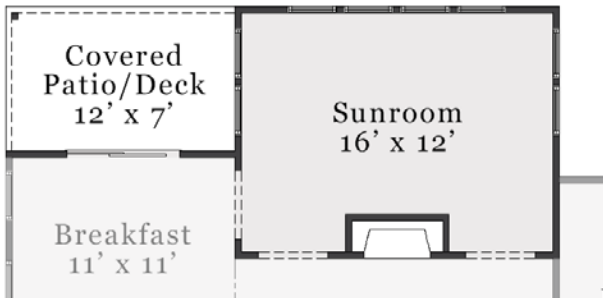


A PERCENTAGE OF EVERY HOME SOLD GOES TO SUPPORT ALZHEIMER'S RESEARCH AND CARE.

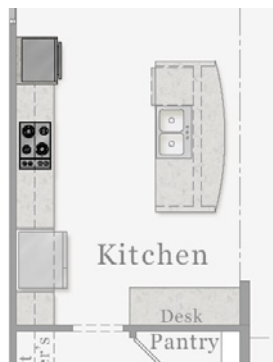
First Floor



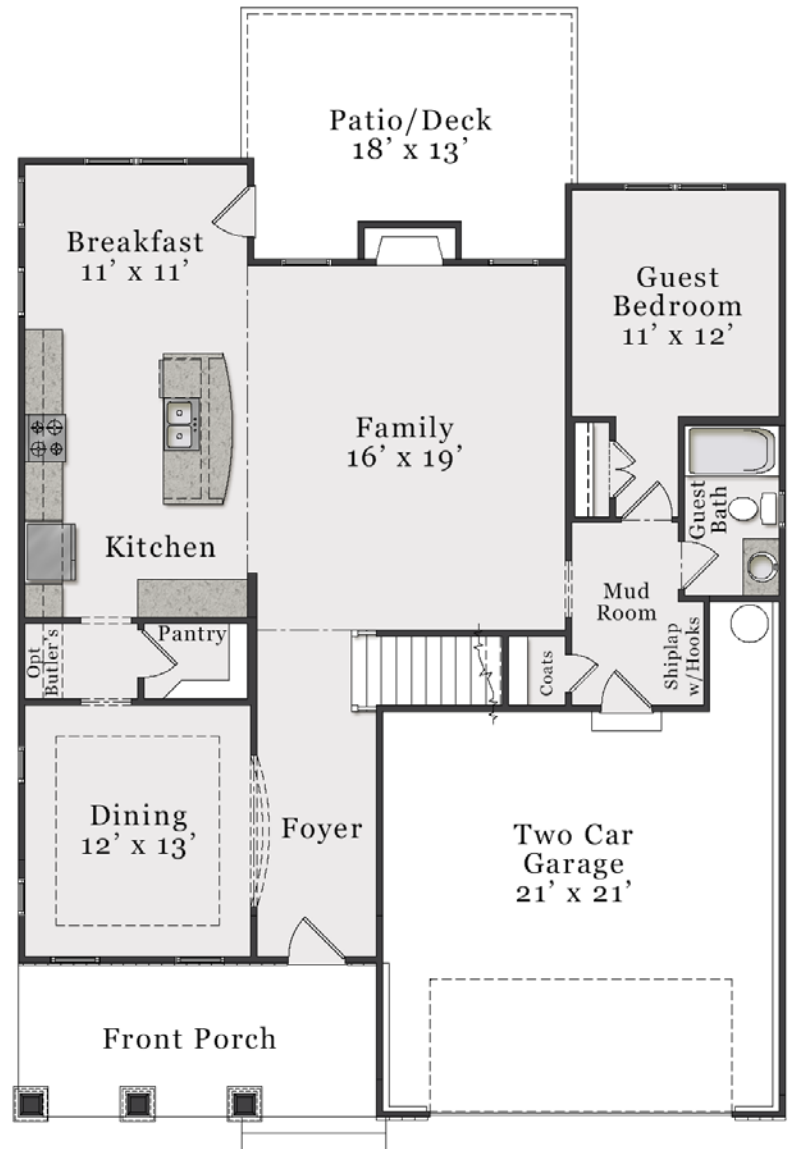
Opt. Covered Patio/Deck



Opt. Sunroom (Approx. 220 sq. ft.)

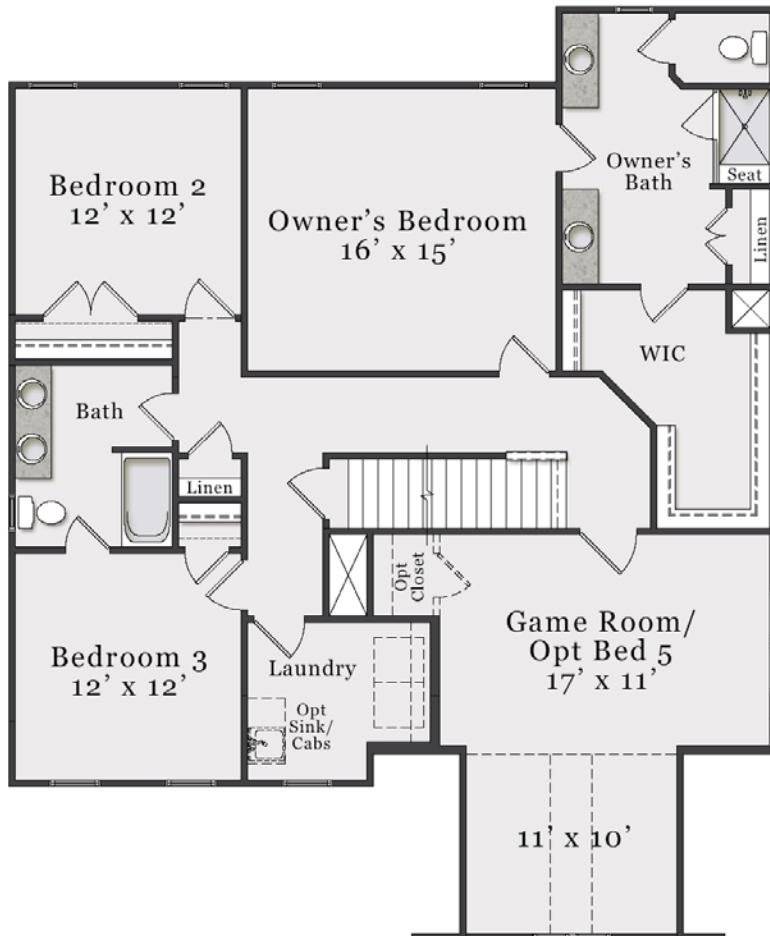


Opt. Deluxe Kitchen



The floorplan shown is the Craftsman elevation. Other elevations are similar but may include minor layout and square footage differences.

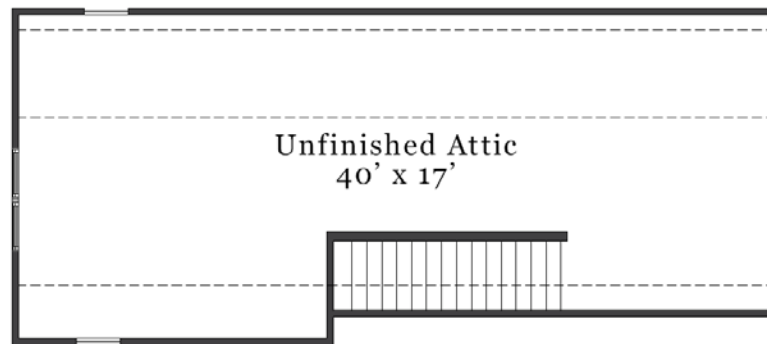
Second & Third Floor



Opt. Deluxe Owner's Bath



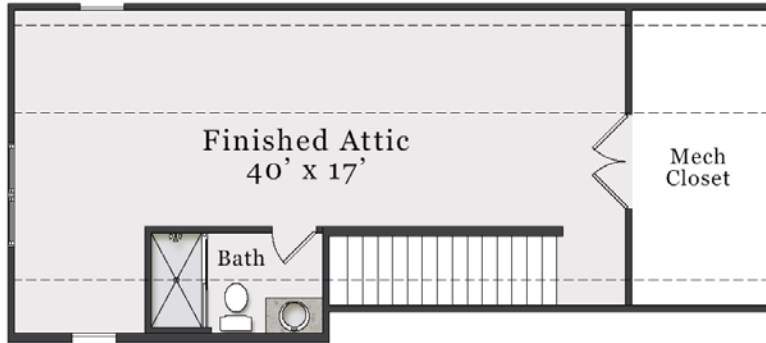
*Opt. 2nd Floor with
Finished Attic*



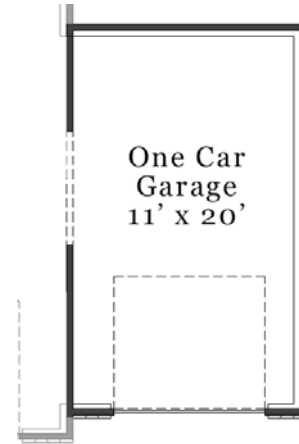
Unfinished 3rd Floor (Approx. 645 sq. ft. unfinished)

The floorplan shown is the Craftsman elevation.
Other elevations are similar but may include minor layout and square footage differences.

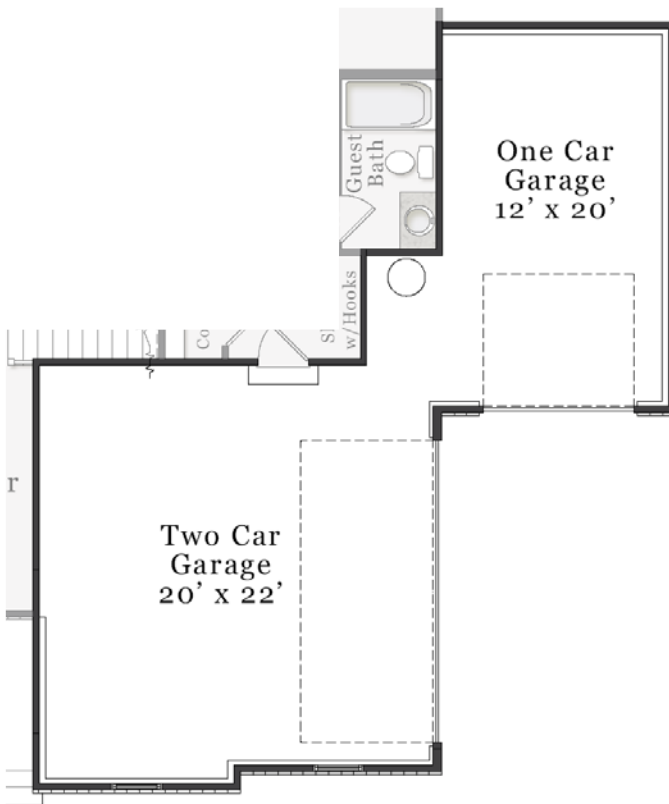
Plan Options



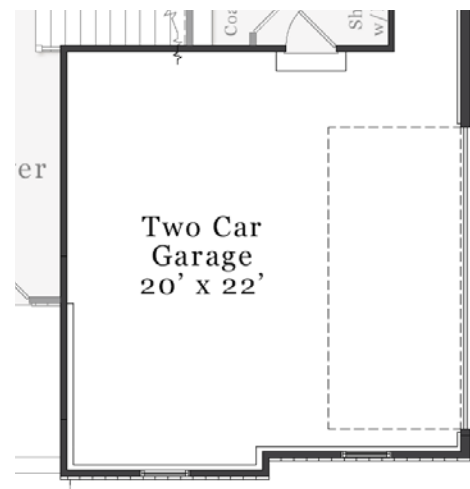
Opt. Finished 3rd Floor with Bath (Approx. 530 sq. ft.)



Opt. Third Bay Garage



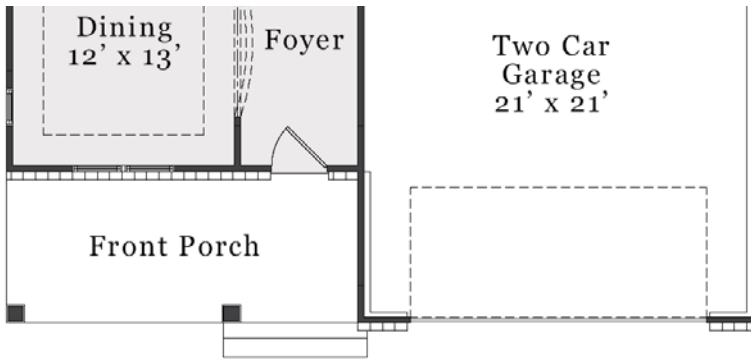
Opt. Third Bay with Side Load Garage



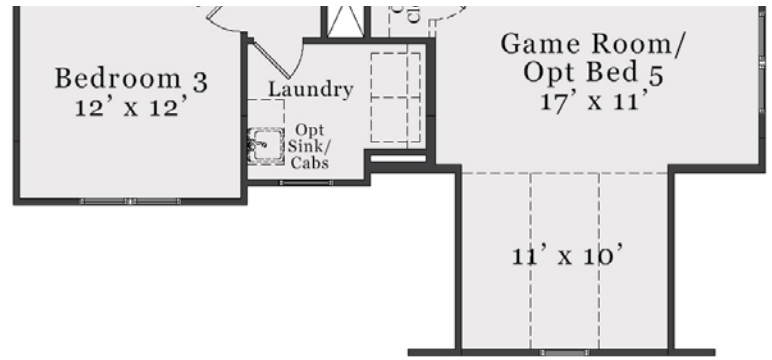
Opt. Side Load Garage

The floorplan shown is the Craftsman elevation. Other elevations are similar but may include minor layout and square footage differences.

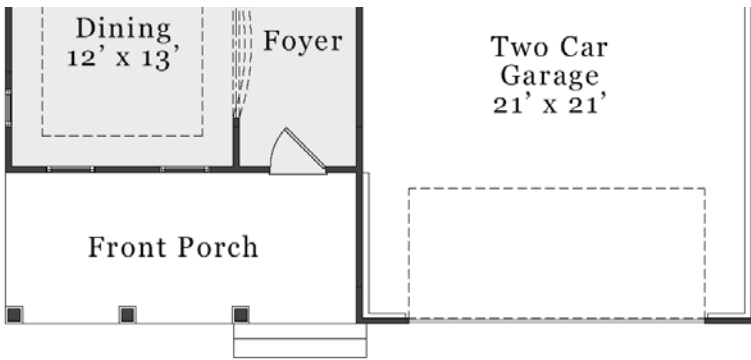
Elevation Specific Base Floors



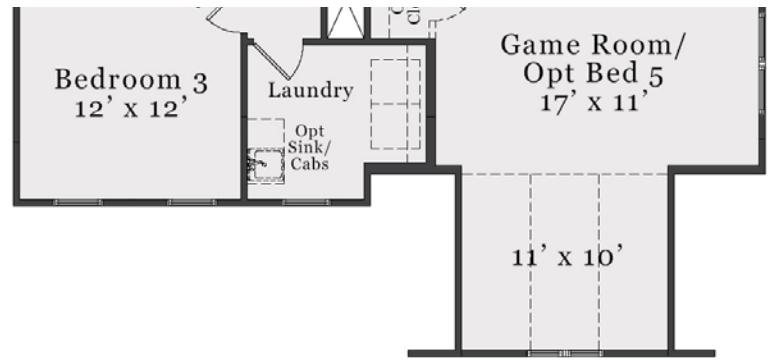
Classic First Floor



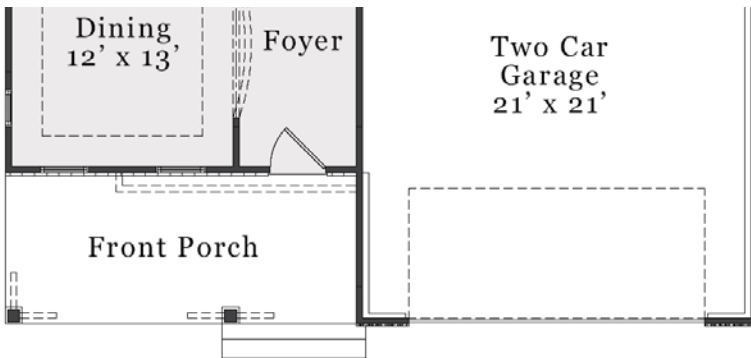
Classic Second Floor



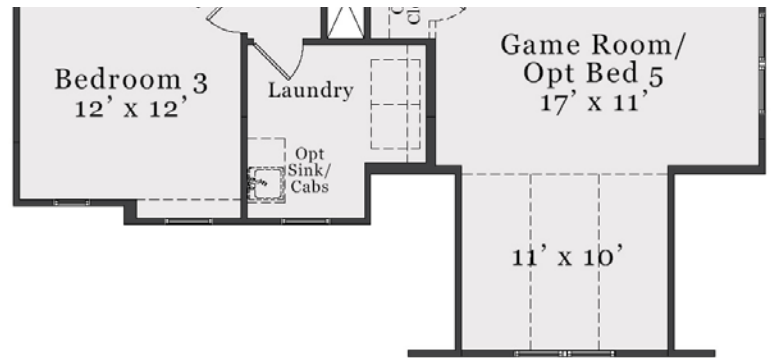
Coastal First Floor



Coastal Second Floor



European First Floor



European Second Floor