

## The Clark

Bedrooms: 4-5  
Baths: 3.5-4.5



*Craftsman*

3,346 sq. ft.



*Classic*

3,346 sq. ft.



*Coastal*

3,346 sq. ft.



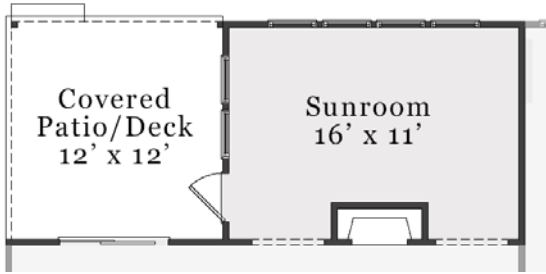
*European*

3,353 sq. ft.



A PERCENTAGE OF EVERY HOME SOLD GOES TO SUPPORT ALZHEIMER'S RESEARCH AND CARE.

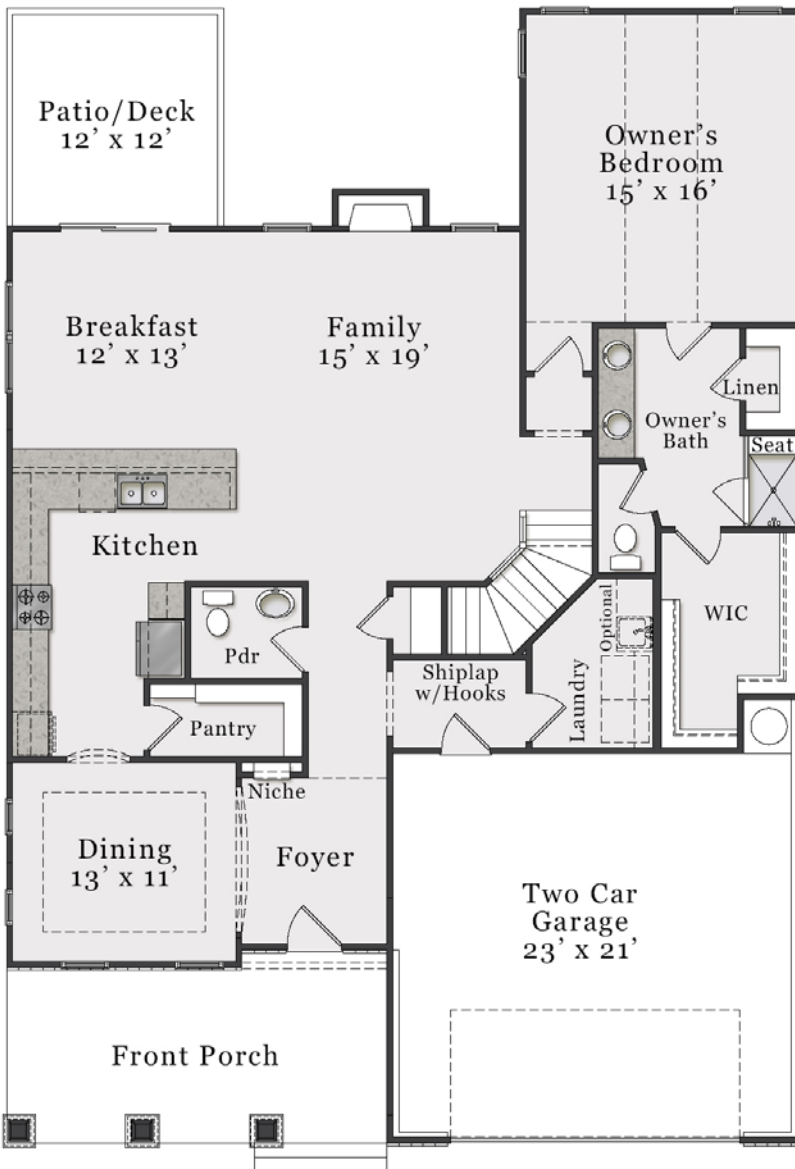
# First Floor



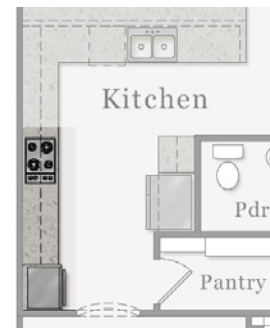
*Opt. Sunroom (Approx. 196 sq. ft.)*



*Opt. Covered Patio/Deck*



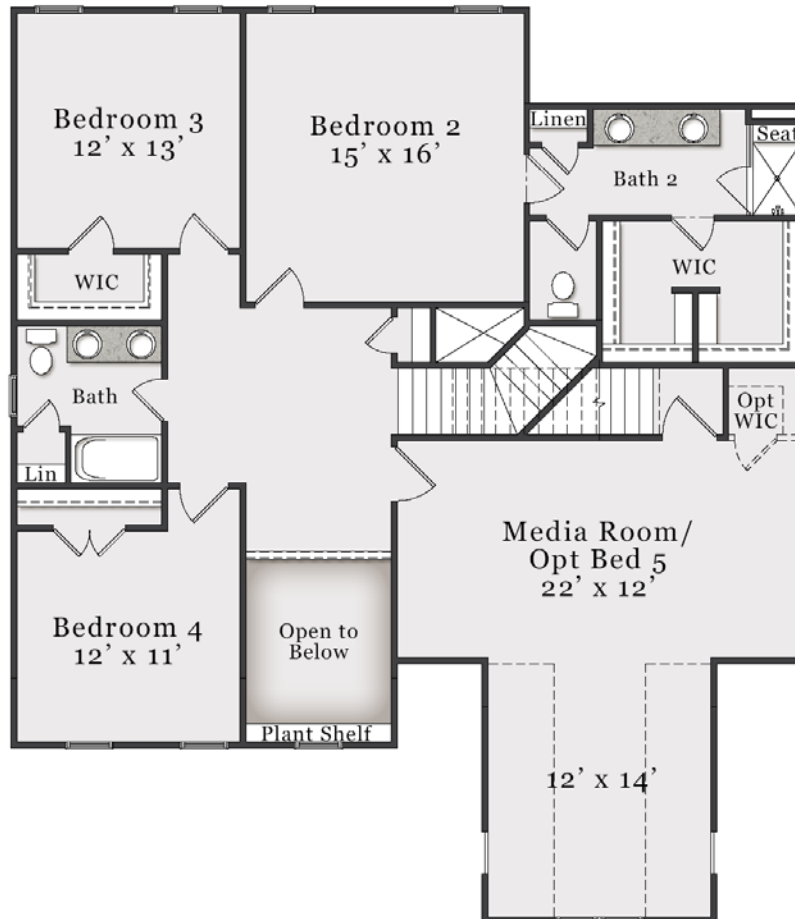
*Opt. Deluxe Owner's Bath*



*Opt. Deluxe Kitchen*

The floorplan shown is the Craftsman elevation. Other elevations are similar but may include minor layout and square footage differences.

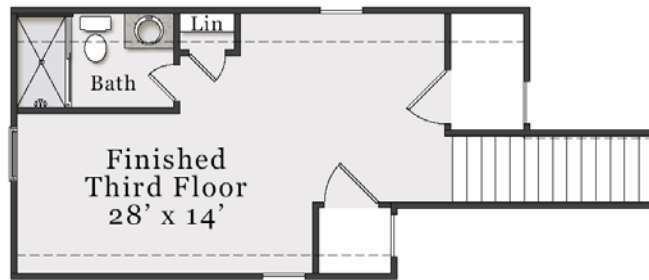
# Second & Third Floor



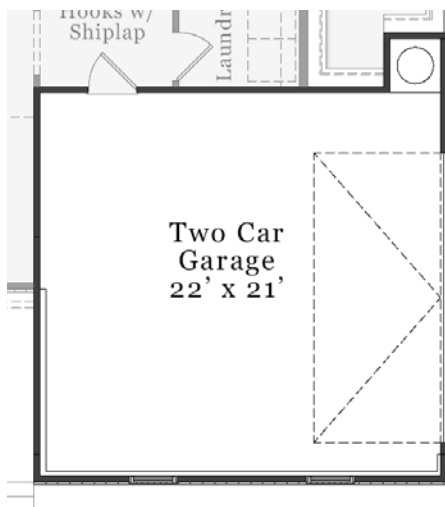
*Unfinished 3rd Floor (Approx. 432 sq. ft. unfinished)*

The floorplan shown is the Craftsman elevation.  
Other elevations are similar but may include minor layout and square footage differences.

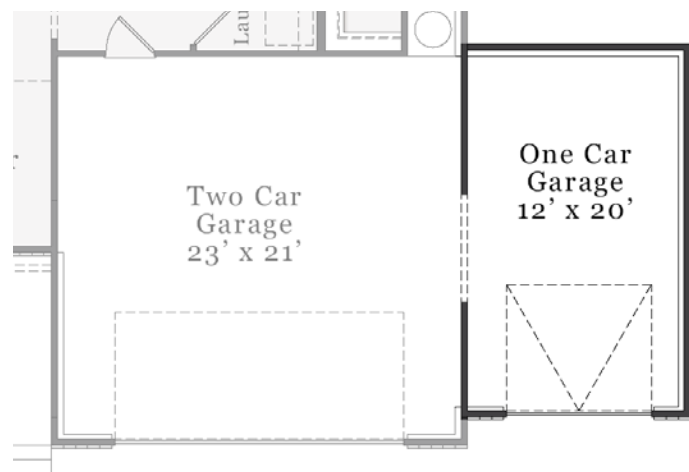
# Plan Options



*Opt. Finished 3rd Floor with Bath (Approx. 386 sq. ft.)*



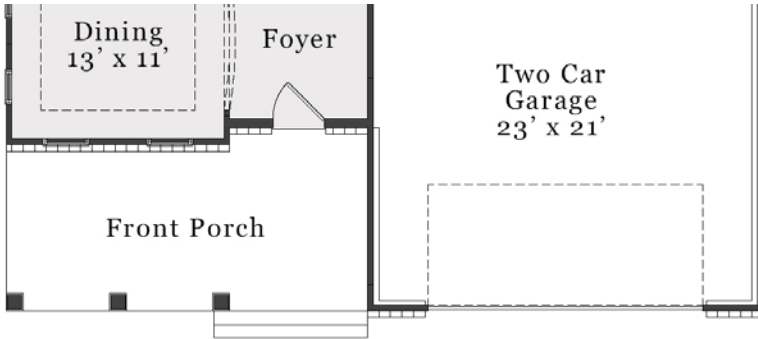
*Opt. Side Load Garage*



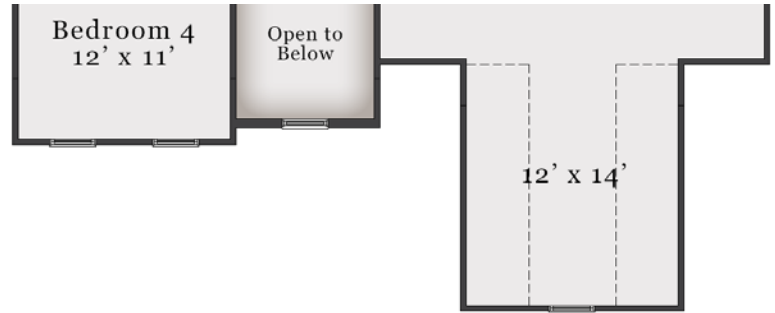
*Opt. Third Bay Garage*

The floorplan shown is the Craftsman elevation.  
Other elevations are similar but may include minor layout and square footage differences.

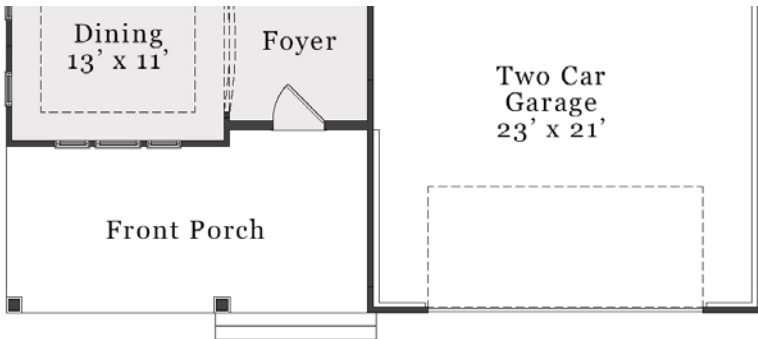
# Elevation Specific Base Floors



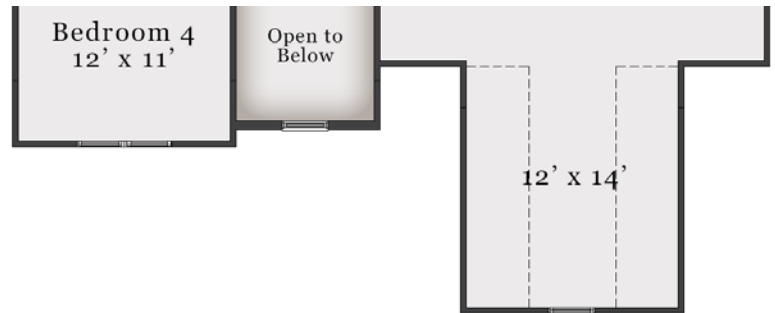
*Classic First Floor*



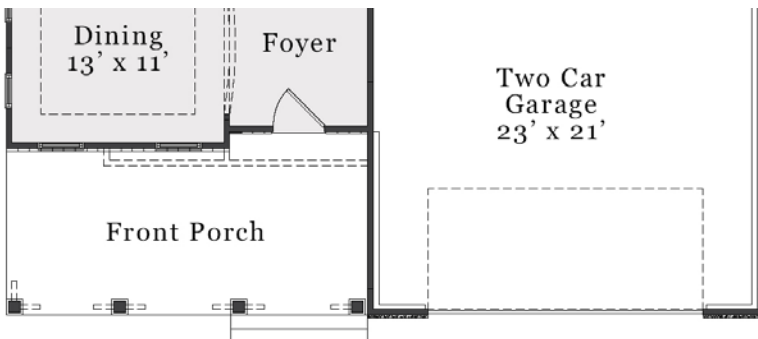
*Classic Second Floor*



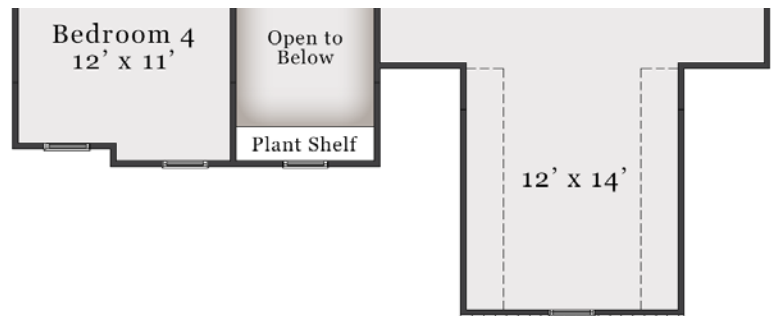
*Coastal First Floor*



*Coastal Second Floor*



*European First Floor*



*European Second Floor*